

Monthly Monitoring Data



Environmental Protection Licence Number: 12693

Link to EPL12693 on EPA Public Register: [Click Here](#)

Licensee: Newcastle Coal Infrastructure Group Pty Ltd, Locked Bag 6003, Hunter Region Mail Centre NSW 2310

Premises: Newcastle Coal Infrastructure Group, Cormorant Road, Kooragang NSW 2304

Date Published: 15th January 2018

Note: On the 25th August 2017 an amendment was made to the NCIG Environmental Protection Licence (EPL12693) which removed the requirement for ambient air quality monitoring at Points 7-10 and 14-15. However, NCIG will continue to monitor and publish ambient air quality data for these locations previously listed in EPL12693 for the interest of the public.

Depositional Dust Monitoring

Sample Period: 2nd November 2018 – 4th December 2018

Date Obtained: 9th January 2019

Units of Measure: grams per square metre per month (g/m²/month)

Frequency: Monthly

	Monitoring Point 7 - DG3 (Kooragang Island)	Monitoring Point 8 - DG4 (Mayfield Sport Rec Club)	Monitoring Point 9 - DG5 (Mayfield West)	Monitoring Point 10 - DG6 (Sandgate)
Depositional Dust	1.3	1.4	1.2	2.9

High Volume Air Sampling

Date Obtained: 9th January 2019

Units of measure: micrograms per cubic metre (µg/m³)

Frequency: Weekly

	Monitoring Point 14 - HVAS 1 (Steel River)				Monitoring Point 15 - HVAS 2 (Crebert Street)			
	TSP		PM10		TSP		PM10	
03-Nov 18	72	03-Nov 18	33	03-Nov 18	74	03-Nov 18	32	
09-Nov 18	43	09-Nov 18	21	09-Nov 18	34	09-Nov 18	17	
15-Nov 18	52	15-Nov 18	27	15-Nov 18	45	15-Nov 18	22	
21-Nov 18	84	21-Nov 18	47	21-Nov 18	93*	21-Nov 18	45	
27-Nov 18	56	27-Nov 18	34	27-Nov 18	72	27-Nov 18	30	

NB. Sample period is a 24-hour period on each of the above dates | TSP = Total Suspended Particulates | PM10 = Particulate Matter <10 microns

*Elevated result – A dust storm was observed in Newcastle on the 22nd November. It is likely that particulate concentrations were increasing in the 24 hours preceding the dust storm, contributing to the elevated concentrations on the 21st November.

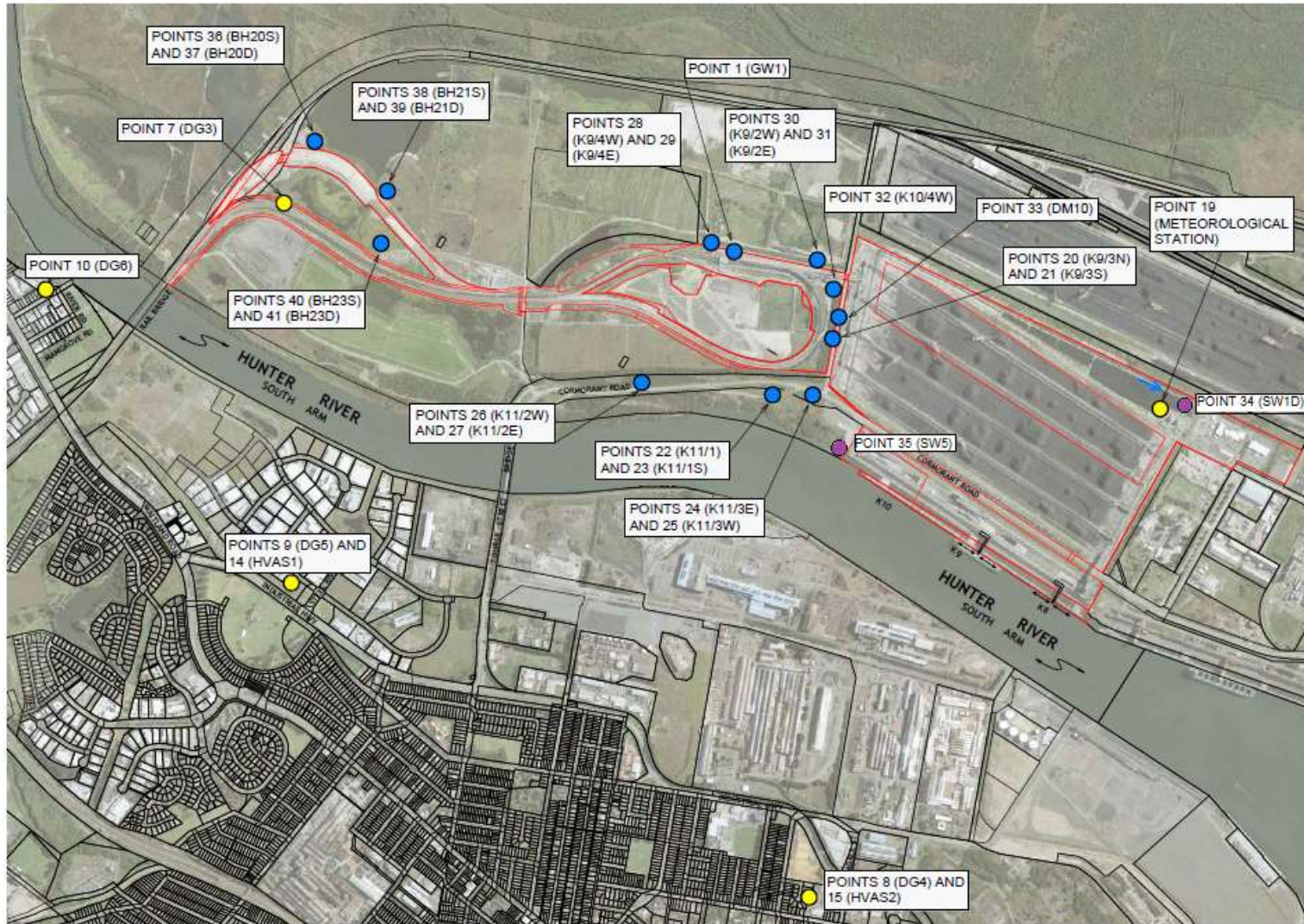


Figure 1: Groundwater, Surface Water and Additional Ambient Air Quality Monitoring Locations.