

# NEWCASTLE COAL INFRASTRUCTURE GROUP COAL EXPORT TERMINAL KOORAGANG ISLAND, NEW SOUTH WALES

Information Handout - August 2006

## THE PROPONENT

Newcastle Coal Infrastructure Group (NCIG) is a consortium of six companies including: Hunter Valley Energy Coal Limited; Centennial Coal Company Limited; Excel Coal Limited; Donaldson Coal Pty Limited; Whitehaven Coal Mining Pty Ltd and Felix Resources Limited.

## THE PROJECT

The Project involves the progressive construction and operation of a new coal export terminal (CET) on Kooragang Island in Newcastle, New South Wales (NSW) (Figure 1). The CET is required to overcome capacity constraints at Newcastle and to meet the forecast future demand requirements for coal exports, and is being designed with a capacity up to 66 million tonnes per annum. The CET will be a modern, state-of-the-art facility. The main activities associated with the development of the CET will include:

- foundation preparation/capping of a rail corridor traversing the existing KIWEF for the development of the rail spurs, rail sidings and rail loops;
- construction of rail spurs, rail sidings and rail loops, rail overpass, train unloading stations and connecting conveyors;
- re-use of dredged materials from the south arm of the Hunter River as pre-load and engineering fill for construction of the coal storage area, rail corridor and wharf facilities;
- construction of a coal storage area including coal stockpiles, conveyors, transfer points and combined stacker/reclaimers;
- construction of wharf facilities, shiploaders, conveyors and buffer bins;
- development of water management infrastructure including site drainage works, stormwater settlement ponds, primary and secondary settling ponds, site water pond, water tanks and stockpile spray system;
- installation of electricity reticulation and control systems;
- development of access roads and internal roads;
- construction of administration and workshop buildings;
- other associated minor infrastructure, plant, equipment and activities; and
- operation of the CET up to a capacity of 66 Mtpa, including the unloading of coal trains, the stockpiling of coal, and the loading of coal to ships via the wharf facilities and shiploaders.

The Project will generate up to 500 jobs during construction and 100 jobs during operation of the CET.

## THE APPROVAL PROCESS

Approval for the Project is being sought under Part 3A of the *Environmental Planning and Assessment Act, 1979* (EP&A Act). In accordance with section 75D(1) of the EP&A Act, the Minister for Planning is the approval authority for the Project.

## CURRENT STATUS

The Project Application and Preliminary Assessment were submitted to the Department of Planning (DOP) in December 2005.

A Planning Focus Meeting was held in Newcastle in March 2006 attended by representatives from: Premiers Department; DOP; Department of Environment and Conservation; NSW Maritime Authority; Department of Primary Industries; Australian Rail Track Corporation; and Newcastle Port Corporation. Newcastle City Council was invited to this meeting by the DOP.

Environmental Assessment Requirements (EARs) were issued by the Director-General of the DOP in April 2006 for the Project, pursuant to section 75F(3) under Part 3A of the EP&A Act.

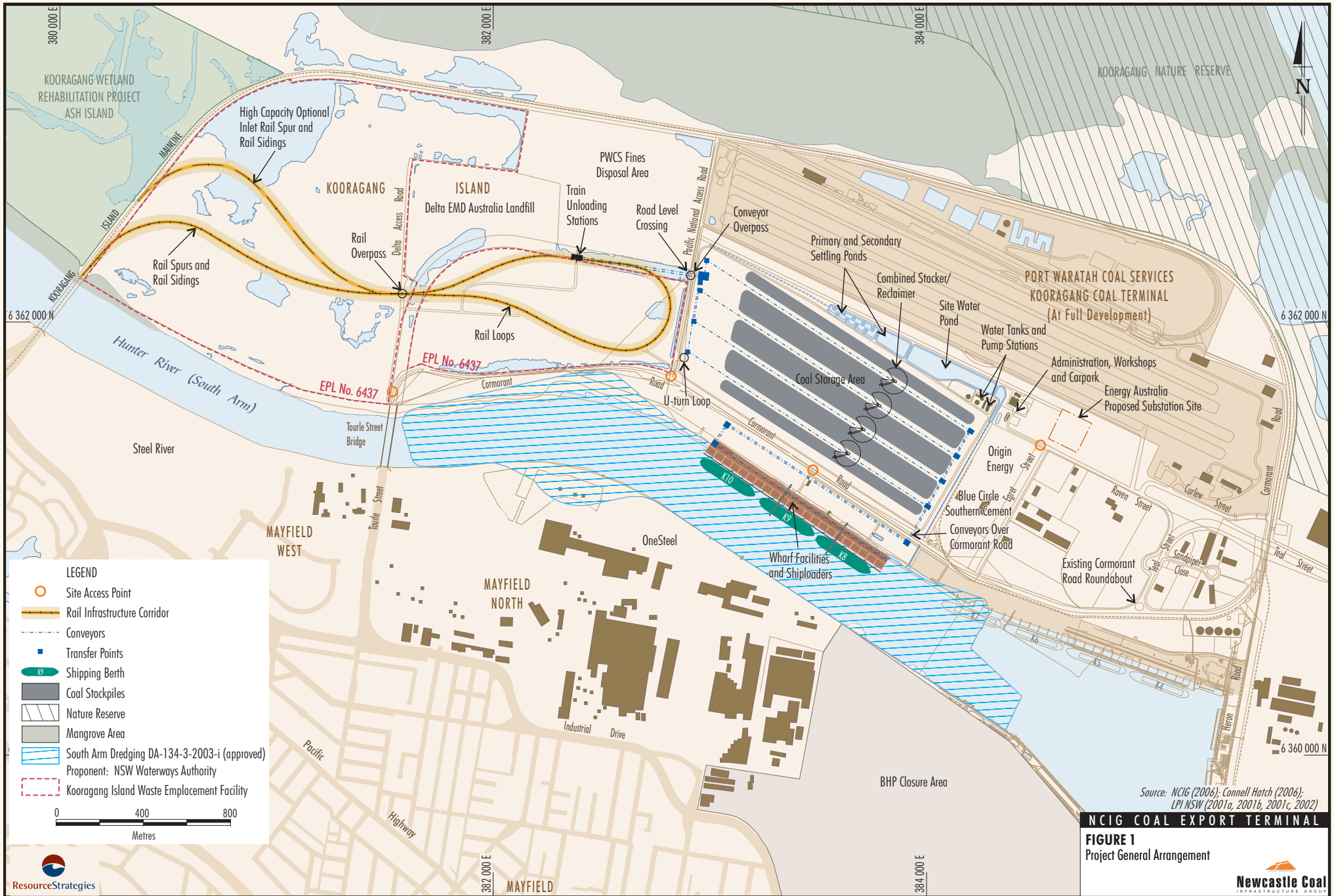
The Environmental Assessment is on exhibition from 10 August 2006 to 14 September 2006 at the following locations:

- Department of Planning Information Centre, Sydney
- Department of Planning Newcastle Regional Office
- Department of Planning website
- Newcastle City Council
- Port Stephens Council
- Nature Conservation Council, Sydney
- Newcastle Coal Infrastructure Group website

The Environmental Assessment is also available at the Stockton and Mayfield Libraries.

A Stakeholder Focus Group has been formed to facilitate consultation with a broad cross section of the community.

Subject to Project Approval, construction is scheduled to commence in 2007.



Source: NCIG (2006); Connell Hatch (2006); LPI NSW (2001a, 2001b, 2001c, 2002)

**NCIG COAL EXPORT TERMINAL**

**FIGURE 1**  
Project General Arrangement